



# WESTHOLME

— QUEENSLAND —  
AUSTRALIA

## PRODUCT SPECIFICATION

**Product Code:** 85496

**NAMP No:** 121

**Marble Score:** 8 - 9+

**Product Description:** BEEF NAVEL END BRISKET 5 RIB IW/VAC [AA8-9+]

---

### PRODUCT SPECIFICATION

**Cattle Type:** F1 WAGYU

**Destination:** GENERAL

**Refrigeration:** R

**Status:** HALAL

**Bone:** BONELESS

**Feed Type:** GRAIN FED

**Cut Type:** NAVEL END BRISKET

**Fat Cover:** 0.15 INCH

**Additional Notes:** A Navel End Brisket is prepared from a Brisket (item 2323) by the removal of the Point End and following the caudal edge of the specified rib.

**Manufacturing Specification:** MAX WIDTH SQUARE LOOSE ENDS

---

### PACKING SPECIFICATION

**Bag Type:** WESTHOLME

**Drip:** -

**Pack:** IW/VAC

**Carton Size:** CHILL LARGE

**AA Insert:** AA8-9+

**Weight:** CATCH

**Country Insert:** NONE

**Pieces Per Bag:** 1

**Lid Type:** WESTHOLME

**Bags Per Carton:** 4

**AA Label:** AA8-9+

**Pieces Per Carton:** 4

**Country Label:** NONE



# WESTHOLME

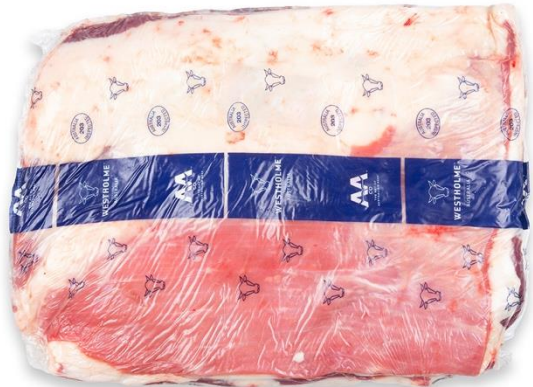
— QUEENSLAND —  
AUSTRALIA

## PRODUCT SPECIFICATION

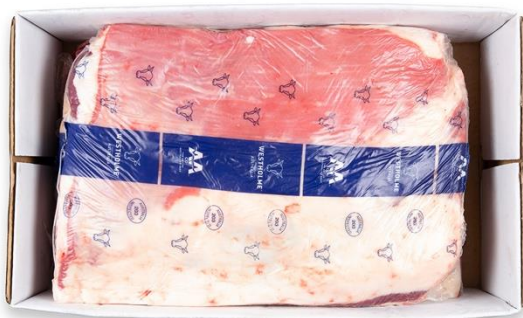
**Cut Type**



**Pieces in bag**



**Bags in carton**



**Carton lid**



