



# WESTHOLME

— QUEENSLAND —  
AUSTRALIA

## PRODUCT SPECIFICATION

**Product Code:** 85455

**NAMP No:** 167A

**Marble Score:** 6 - 7

**Product Description:** BEEF KNUCKLE IW/VAC F1 WAGYU [AA6-7]

---

### PRODUCT SPECIFICATION

**Cattle Type:** F1 WAGYU

**Destination:** GENERAL

**Refrigeration:** R

**Status:** HALAL

**Bone:** BONELESS

**Feed Type:** GRAIN FED

**Cut Type:** KNUCKLE

**Fat Cover:** TTSS

**Additional Notes:** A Knuckle is prepared from a Thick Flank by removal of the M. tensor fasciae latae and M. cutaneous trunci with associated fat and subiliac lymph node.

**Manufacturing Specification:** RETAIN RABBIT EARS

---

### PACKING SPECIFICATION

**Bag Type:** WESTHOLME

**Drip:** M

**Pack:** IW/VAC

**Carton Size:** CHILL LARGE

**AA Insert:** AA6-7

**Weight:** CATCH

**Country Insert:** NONE

**Pieces Per Bag:** 1

**Lid Type:** WESTHOLME

**Bags Per Carton:** 4

**AA Label:** AA6-7

**Pieces Per Carton:** 4

**Country Label:** NONE



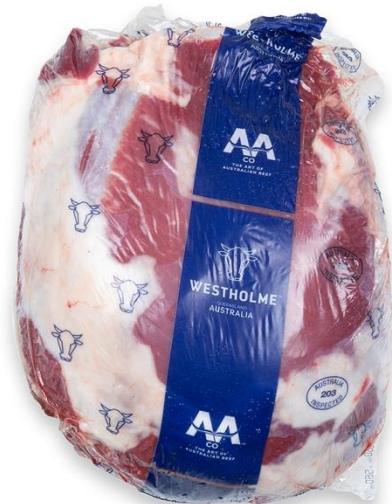
**WESTHOLME**  
— QUEENSLAND —  
**AUSTRALIA**

PRODUCT SPECIFICATION

**Cut Type**



**Pieces in bag**



**Bags in carton**



**Carton lid**



