



WESTHOLME

— QUEENSLAND —
AUSTRALIA

PRODUCT SPECIFICATION

Product Code: 85513

NAMP No: 167A

Marble Score: 8 - 9+

Product Description: BEEF KNUCKLE IW/VAC F1 WAGYU [AA8-9+]

PRODUCT SPECIFICATION

Cattle Type: F1 WAGYU

Destination: GENERAL

Refrigeration: R

Status: HALAL

Bone: BONELESS

Feed Type: GRAIN FED

Cut Type: KNUCKLE

Fat Cover: TTSS

Additional Notes: A Knuckle is prepared from a Thick Flank by removal of the M. tensor fasciae latae and M. cutaneous trunci with associated fat and subiliac lymph node.

Manufacturing Specification: RETAIN RABBIT EARS

PACKING SPECIFICATION

Bag Type: WESTHOLME

Drip: M

Pack: IW/VAC

Carton Size: CHILL LARGE

AA Insert: AA8-9+

Weight: CATCH

Country Insert: NONE

Pieces Per Bag: 1

Lid Type: WESTHOLME

Bags Per Carton: 4

AA Label: AA8-9+

Pieces Per Carton: 4

Country Label: NONE



WESTHOLME

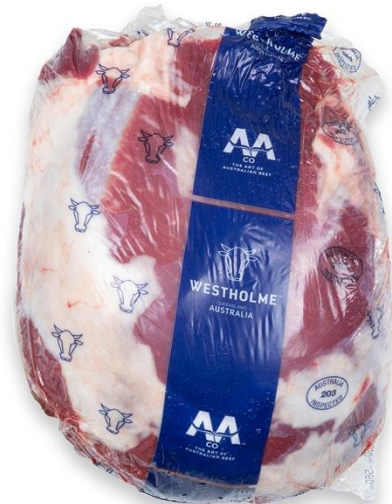
— QUEENSLAND —
AUSTRALIA

PRODUCT SPECIFICATION

Cut Type



Pieces in bag



Bags in carton



Carton lid



